

# Conference and Training Centre Rooms and facilities Castle



SCHLOSS MARBACH

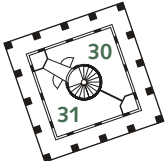
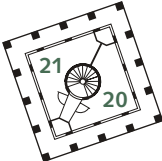
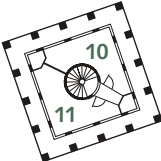
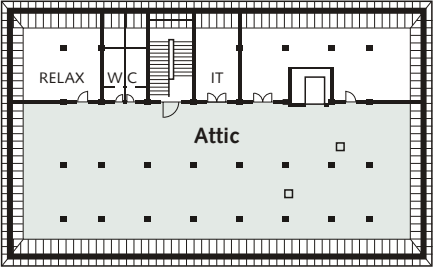
# Main building + Towers

TOP FLOOR

Attic

Relaxation therapy  
IT room

Rooms 10|11 20|21 30|31

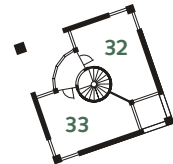
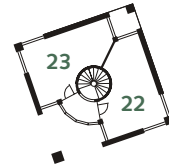
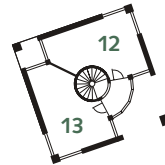
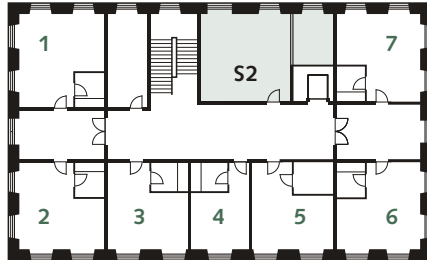


FIRST FLOOR

Seminar 2

Rooms 1 to 7

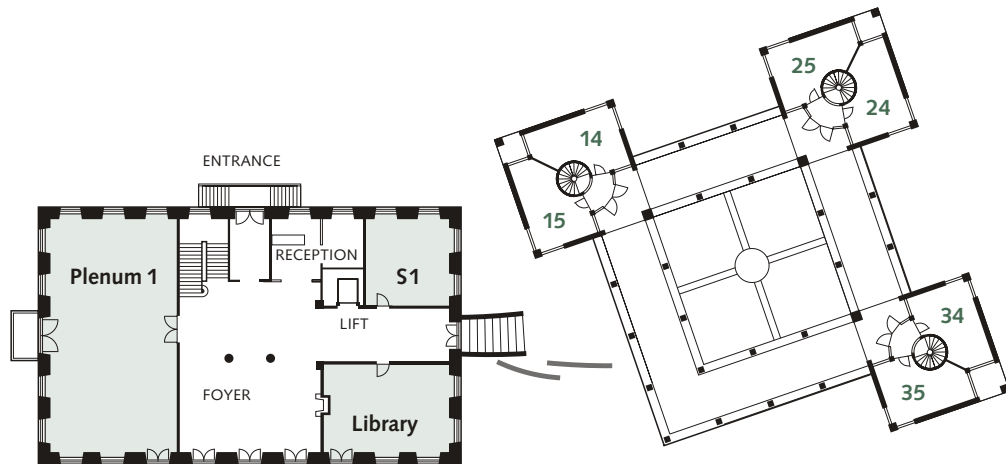
Rooms 12|13 22|23 32|33



## BEL-ÉTAGE

Plenum 1  
Seminar 1  
Library

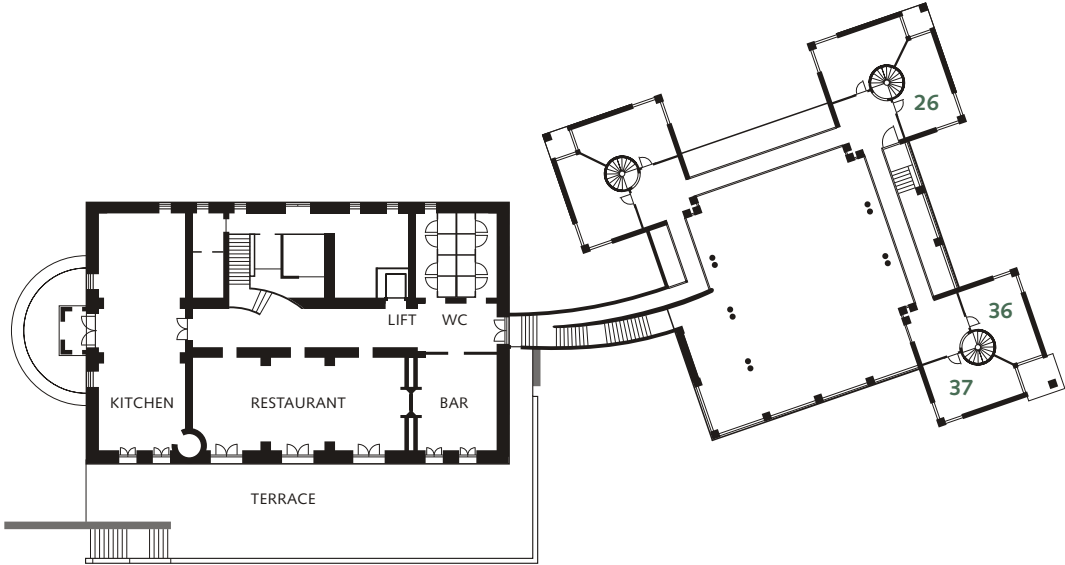
Rooms 14|15 24|25 34|35



GROUND FLOOR

Restaurant  
Castle Bar  
Terrace

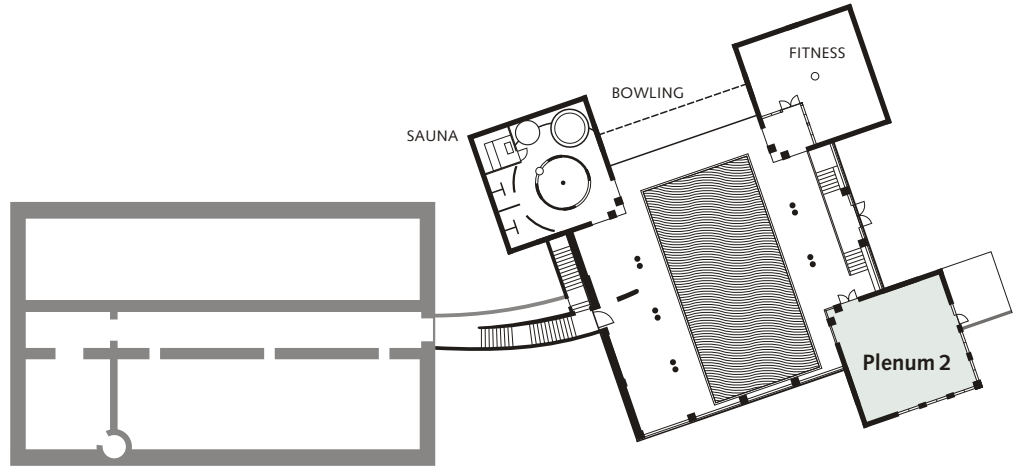
Rooms 26 36|37



**BASEMENT**

**Plenum 2**

- Sauna, Whirlpool
- Fitness room
- Swimming pool
- Bowling alley at sublevel



	<b>Plenum 1</b>	<b>Plenum 2</b>	<b>Library</b>	<b>Seminar 1</b>	<b>Seminar 2</b>	<b>Attic</b>	<b>Boathouse</b>
<b>Location</b>	bel-étage	basement	bel-étage	bel-étage	first floor	top floor	lakeside
<b>L*W*H</b>	18,5*10,5*3,6	10*9,5*2,9	9,5*6,1*3,6	6,6*6,1*3,6	6,9*6,8*3,4	20*15*4,5	8,8*6,3*3
<b>Floor space</b>	195 m <sup>2</sup>	94 m <sup>2</sup>	70 m <sup>2</sup>	45 m <sup>2</sup>	47 m <sup>2</sup>	300 m <sup>2</sup>	55 m <sup>2</sup>
<b>Windows</b>	10	7	5	4	3	7 (small)	4
<b>Window fronts</b>	3 / lake view	2 / lake view	2 / lake view	2	1	2	2 / lake view
<b>U-shape</b>	40 participants	20 participants	14 participants	12 participants	14 participants	18 participants	16 participants
<b>Parliament</b>	60	18		12	12	20	16
<b>Interaction</b>	3 x 10 max.	2 x 10 max.	2 x 7 max.	2 x 6 max.	2 x 6 max.	3 x 12 max.	2 x 8 max.
<b>Rhombus</b>	46						
<b>Concert</b>	80	40					

## CONFERENCE EQUIPMENT

The use of equipment is included in the daily rate for seminar and conference rooms.

### Projection technique

- Beamer – 1500 to 7000 ANSI-Lumen, depending on room size
- Visualizer in Forum and Plenum 1
- Overhead projector
- Plasma screen
- TV monitors
- VHS videorecorder – PAL, NTSC
- Big screen – Forum: 5,5 \* 4 m; Plenum 1: 5,4 \* 3,9 m
- Mobile screen – 3 \* 3 m
- White boards
- Pin boards
- Flip charts with paper
- Moderation server, including Material
- Carousel slide projector
- Fade-out equipment in Forum and Plenum 1

### Audio

- Public address system in Plenum 1 and 2 and all Bella Vista rooms
- Microphone equipment: 3 x wireless in Forum and Plenum 1
- Wireless clip-on microphone in Forum and Plenum 1
- DVD player
- CD player

- Conference audio recorder
- Dictating machine

### Furthermore

- Digital video cameras + tripod
- VHS video cameras
- Digital photo cameras
- Polaroid cameras
- Lectern (vertically adjustable)
- Telescopic pointer
- Laser pointer
- Copy service (colour copies)
- Network accesses
- Bottom power outlets
- Wireless control in the Forum
- IT room mit 3 work stations
- Outdoor group work stations
- Wireless LAN in the Castle and Bella Vista

### On request

- Interpreter cabins
- PC oder laptop stations



Conference and Training Centre  
Schloss Marbach GmbH  
78337 Oehningen, Germany  
Telephone +49 7735 8130  
Telefax +49 7735 813100  
E-mail [info@schlossmarbach.de](mailto:info@schlossmarbach.de)  
[www.schlossmarbach.de](http://www.schlossmarbach.de)